

PENSTOCKSONLINE

www.penstocksonline.com

QW MANUAL CABLE WINCH OPERATION

Generally the QW Winch / Crank Handle Operation will be required to control the position of non-return valves. Better known as Flap Valves in the trade.

The winch may be mounted in any position as long as the operator is standing in a comfortable position with unobstructed access and a clear view of the winch cable.

The mounting location for the winch and any attached structure must be capable of handling the static and dynamic forces imposed by the load of the job it is intended for, seeking suitable engineering guidance.

Generally the cable winch will be mounted onto a plinth / stand / pillar and can be complete with suitable protection from vandalism via a cover.

To reduce efforts enforced on the operating handle, many cable winches will be supported complete with an outreach bracket.

All materials are available on request and must be specified by the end user.



CABLE WINCH OPERATION

CAT 4800-S1

Hand Winch Type QW for
Flap Valve Lifting
Specification

See Dimensional Drawing

Part No. - 0220015

Type - QW1700

Lifting Capacity 1st layer - 1.7 tonne

Lifting Capacity last layer - 1.29 tonne

Drive Group DIN 15020 - 1 Em

Wire Rope Diameter - 12mm

Wire Rope Capacity 1st layer - 7 Metres

Wire Rope Capacity total - 20 Metres

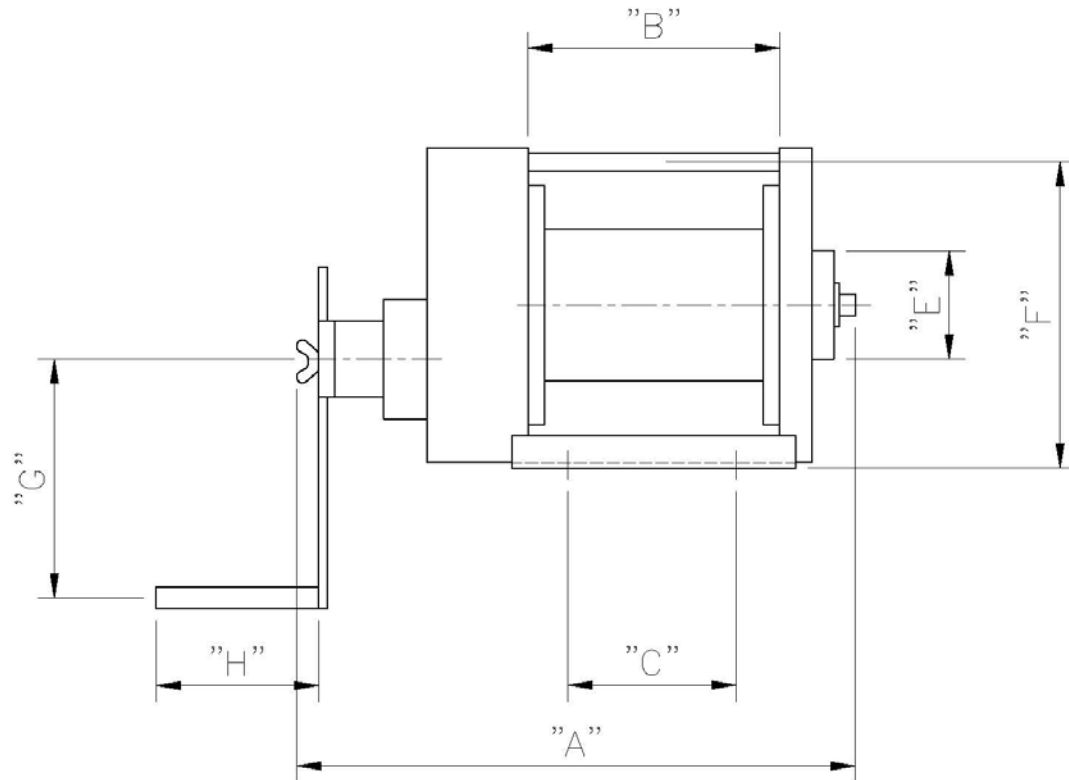
Lift per Crank turn - 16mm

Required effort - 15Kg

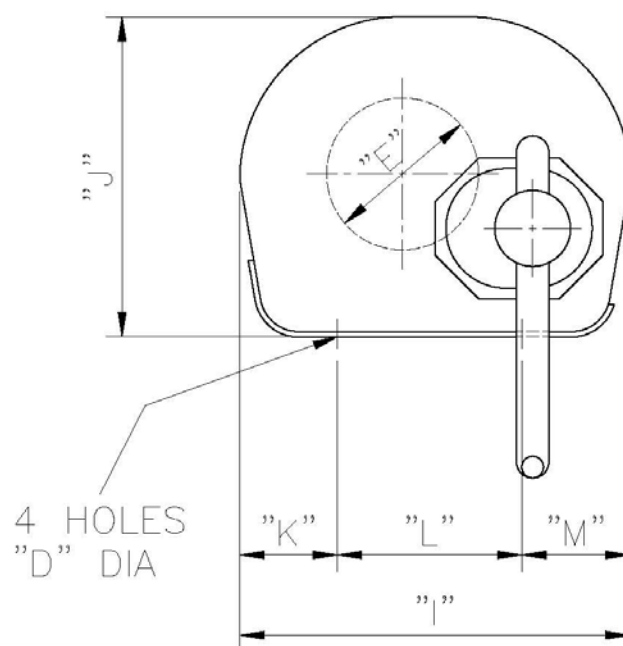
Weight of Unit - 46Kg

Hand Winch Type QW for
Flap Valve Lifting
Drawing Detail

Part No. – 0220015
Type-QW1700



FRONT VIEW



END VIEW

Hand Winch Type QW for
Flap Valve Lifting

Dimensions : See Dimensional Drawing

Part No. - 0220015

Type - QW1700

A = 509mm

B = 205mm

C = 155mm

D = 18mm

E = 139mm

F = 230mm

G = 350mm

H = 150mm

I = 362mm

J = 296mm

K = 96mm

L = 170mm

M = 93mm

4810 TO BE CONFIRMED

4 HOLES DIA 18

345

VERLINDE TYPE MV 2T WINCH

8.20

610

7.59

410

7.18

1367

1235

132

WINCH TO BE SLOTTED AT BASE AS SPECIFIED BY BLACK & VEATCH

300

970

WHEEL KEY

345

533

SLOTTED TO SUIT PIN ON WINCH

GMS PULLEY WHEEL AND MOUNTING BRACKET ASSEMBLY

300

200

300

200

4 HOLES DIA 18

4.44

1500 DEEP FLAP VALVE

T.B.C.

3.14

3010

Typical Drawing only of a Winch operated Flap Valve